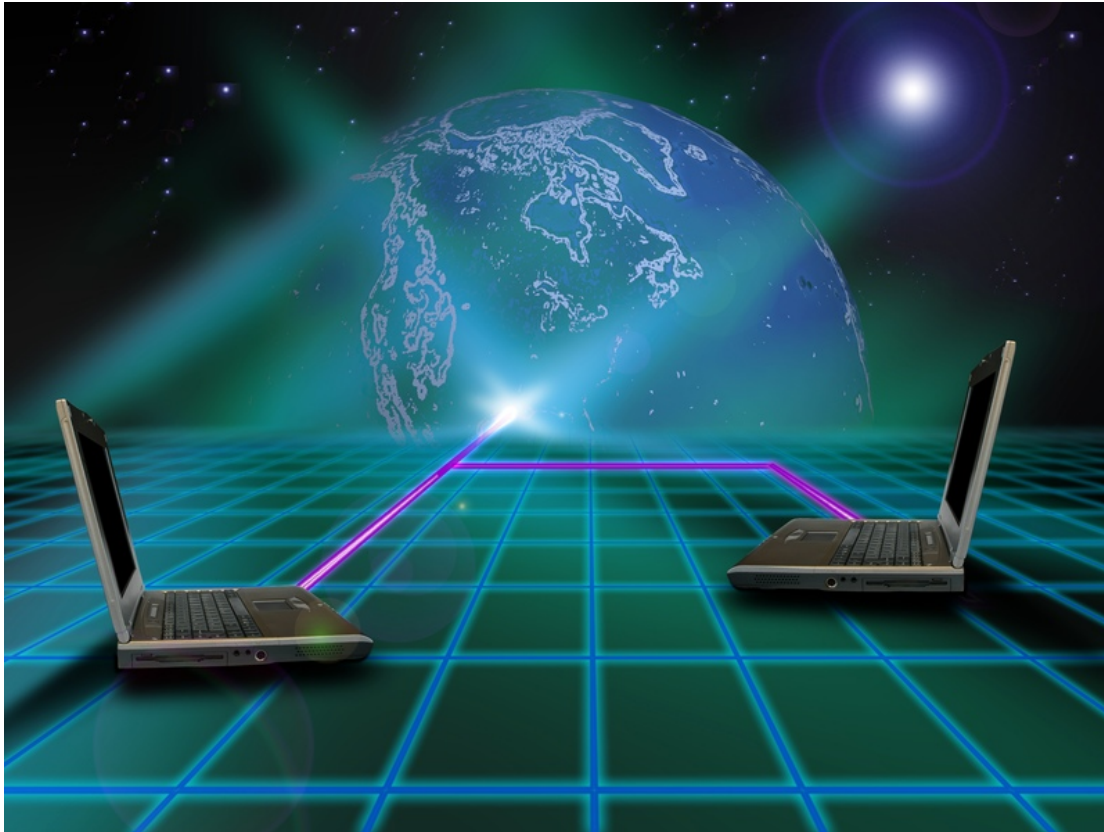


White Paper

Version 1.0



Integrating Proxix Technology



By:
Joshua Goldstein

proxix solutions, inc.
3202 Palm Harbor Blvd., Suite A
Palm Harbor, FL 34683
Tel: 727.781.2662
Web: www.proxix.com

TABLE OF CONTENTS

Introduction	3
Technology Integration Options	3
Core Library Integration	3
PxPoint Wrapper Integration	3
Web Service Integration.....	3
Installable Applications.....	3
ProxixNetwork Applications.....	3
Choosing Integration Options.....	4

Introduction

Proxix Solutions, Inc., software provides enterprises with the location intelligence needed to make profitable business decisions. A variety of deployment options exist. Choose the options that best integrate our technology into your existing infrastructure.

Proxix develops three main types of software:

- ❑ **Core Libraries** – These provide the spatial processing and geocoding power that is the heart of our advanced technology.
- ❑ **Interfaces** – These Web services and adaptors let you integrate our libraries with your own software. Supporting a variety of programming languages, our interfaces allow integration with your custom programs, Web services, or Web sites.
- ❑ **ProxixNetwork Applications** – These applications let you geocode and perform common geospatial processing tasks – without having to write any computer code.

We offer the right options to get proximity solutions into your organization.

Technology Integration Options

Core Library Integration

Each library has an application programming interface (API) for the C and/or C# language. This lets developers call directly from their code into the libraries. With this direct integration, developers have access to the libraries' complete set of functions. The use of Proxix Professional Services is required to assist this type of integration.

PxPoint Wrapper Integration

Proxix developed an object model that simplifies the integration of the PxPoint geocoding and spatial analytics library into custom client applications. A "wrapper" enables rapid and easy integration for developers who are working in C# or Java.

Web Service Integration

Take advantage of a convenient Web service. Get real-time location intelligence – using anything from a PDA to a mainframe. Web services are scalable, secure, and reliable. Based on XML/SOAP standards, Web service integration offers enterprise-wide access. You can host the service, or Proxix can host it for you.

Installable Applications

Existing Proxix applications, such as Geospatial Enterprise (GSE) Real-Time or Batch, solve common client needs. These applications can be installed at a client site, or hosted by Proxix. Neither GSE application requires a database. However, clients desiring user authentication and usage tracking can integrate Microsoft SQL Server, MySQL, Oracle, PostgreSQL, or any ODBC-compliant database.

ProxixNetwork Applications

Proxix offers pre-built applications over the ProxixNetwork. These applications focus on geocoding, insurance, and taxes. Clients can be up and running in hours – without requiring any company engineering resources. Only a Web browser is needed, and clients only pay for the data and services they use. Customized solutions, which include your own data, such as territory assignments, can also be built on the ProxixNetwork.

Choosing Integration Options

The following table provides a summary of Proxix software and technology integration options. Choose the options that best meet your needs. For technical documentation, contact your Proxix salesperson for access to the ProxixNetwork.

Product	Interface	Description & Recommended Uses	Platforms
PxPoint Library	C Language API (Application Programming Interface)	Highest possible performance. Provides access to the entire geocoding and spatial analysis API. Supports Unix and Linux. Recommended for developing server-based and batch-processing applications.	Windows, plus popular Unix or Linux platforms*
PxPoint Java Wrapper	Java API	Offers Java access to all PxPoint functions using a thin wrapper over the C API. In addition, its object model simplifies access to the most common geocoding and spatial features. Choose for integration when developing applications with Java.	Windows, plus popular Unix or Linux platforms*
PxPoint C# Wrapper	C# API	Object model simplifies access to the most common geocoding and spatial features. Choose for C# development.	Windows
Geospatial Enterprise (GSE) Real-Time	XML/SOAP, database optional	Provides enterprise-wide access to spatial information using a Web service. Choose for convenient access from a Web browser.	Server: Windows Clients: Platforms that support Web browsing
GSE Batch	Datafile	Batch processes many thousands, or millions, of address records. Choose for automated batch processing and special job processing workflows.	Windows
CATUM Online	Web pages on ProxixNetwork	Insurance industry application. Provides simple access to users who need hazard information about addresses. Available for both real-time and batch processing.	Server: Windows Clients: Platforms that support Web browsing
Site-US Tax Online	Web pages on ProxixNetwork	Tax information application. Provides simple access to users who need tax information about addresses. Also provides industry-specific tax details. Available for both real-time and batch processing.	Server: Windows Clients: Platforms that support Web browsing
PxPoint Online	Web pages on ProxixNetwork	Provides simple access to users who only need to geocode addresses. Available for batch processing.	Server: Windows Clients: Platforms that support Web browsing

*Windows, plus UNIX (AIX, Sun Solaris 10 for x86 - 32 & 64 Bit, HP-UX in Q1 2008) or Linux (Novell SUSE 10, Red Hat 4 - Linux Core 2.6, Red Hat 4 on IBM PowerPC - Fedora Core 2.6).