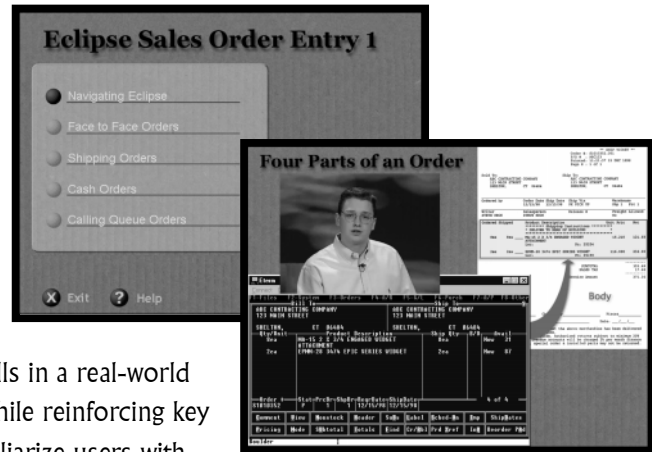


Computer Based Training: Eclipse Sales Order Entry 1

Learn at your own pace ... measure your success. With the exciting Eclipse Sales Order Entry 1 computer based training (CBT) program, you'll do that and more. Train employees easily and consistently.

An interactive multimedia training program, Eclipse Sales Order Entry 1 makes learning Eclipse fun. You'll be amazed how quickly you learn, interacting with a lifelike simulation of Eclipse during five essential exercises.

Each exercise starts with an entertaining video overview, which outlines what you'll be learning. Then it's your turn. You'll create a variety of sales orders that teach you real-life skills in a real-world work flow. Gradually increasing in complexity, while reinforcing key concepts, the five carefully chosen exercises familiarize users with the important sales situations they're likely to encounter in your distribution business.

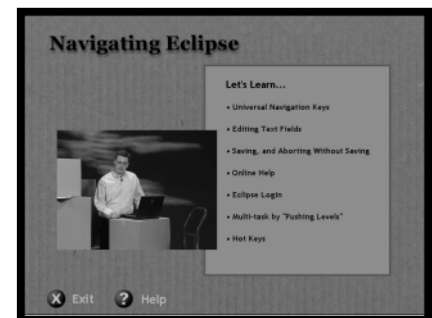


A lively mix of video, audio, and interactivity makes Sales Order Entry 1 the perfect employee training. Speed training of new employees while enhancing skills of existing employees. Save on costly seminar travel stays and enrollment fees. Make learning cost-effective, convenient, and fun.

Learn Quickly:

Employees quickly learn or improve specific job skills by working through engaging, self-paced exercises. All exercises are broken down into a series of step-by-step tasks. Each task is introduced by a brief audio recording explaining the concepts and steps in the task. Topics include:

- **Navigating Eclipse.** Universal Navigation Keys; Editing Text Fields; Saving, and Aborting Without Saving; Online Help; Eclipse Login; Multi-task by Pushing Levels; Hot Keys.
- **Face to Face Orders.** How to create a new sales order; More Eclipse search tricks; Sales order entry is the "heart" of the Eclipse System; An Eclipse sales order has four parts: The Body, Header, Status, and Totals.
- **Shipping Orders.** How to Schedule Orders; Status Codes; The Phantom Processor; The Order Header.
- **Cash Orders.** Handling Cash Transactions; Applying Payments; The Totals Screen; More Navigation and Searching; Comments and Views.

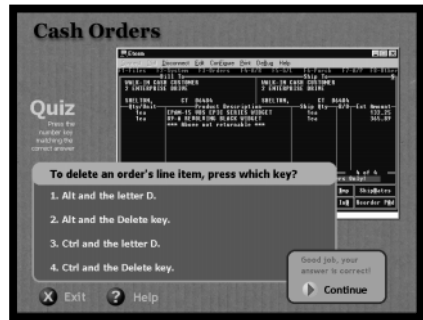


- **Calling Queue Orders.** Calling statuses and queues; Queues are personal reminder lists; Queues replace sticky notes; Queues improve customer service by informing and reminding you; Committing stock for a future date; How Eclipse queues remind you to Call When Specified.

Measure Employee Success:

Measure successful results to ensure consistent employee training. A quiz measures knowledge after each exercise. When users complete the two-hour training program, their quiz scores and user records are saved for their supervisors.

Order the Eclipse CBT reporting option to automatically send user scores to an Eclipse messaging queue. In addition to forwarding individual records, if supervisors need need more detailed data, they can use the Eclipse Report Writer to analyze or compare scores for groups of employees. Consistent training integrated with Eclipse.



System Requirements:

Faster modern computers are recommended for superior multimedia performance, starting with:

- Pentium PC running Windows 95/98, 16 MB RAM memory
- Sound card, keyboard, mouse
- CD-ROM drive, 4x speed or faster
- Display properties: Small fonts, 800 x 600 pixels, 256 colors (high or true color recommended)
- 200 KB of free hard disk for each student's data, or 325 MB of free hard disk space required if installing entire training program and files to a hard drive, instead of running them from the CD-ROM



* Please contact an Eclipse sales representative for information about the Eclipse CBT reporting option.